

In This Issue

[High-Sensitivity I²C Magnetometer](#)

[Current Sensor Evaluation Board](#)

Quick Links

[Sensor Selector Guide](#)

[Isolator Selector Guide](#)

[Online Store](#)

[Contact Us](#)

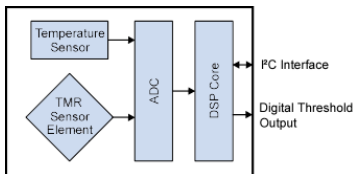
[Twitter](#)

[YouTube](#)

High-Sensitivity I²C Magnetometer

NVE's groundbreaking line of Smart Magnetometers has been expanded with the SM223—a high-sensitivity version of the popular SM228 TMR magnetometer. Unique Tunneling Magnetoresistance (TMR) technology provides lower noise than Hall effect sensors and in-plane sensitivity.

All SM-Series magnetometers are factory calibrated to provide precise analog field measurements. The new part has an I²C interface and a programmable digital threshold output:



SM223 Smart Magnetometer

Key SM223 / SM228 specifications include:

- ±1.5 mT (SM223) or ±15 mT (SM228) range
- 2% of FS accuracy
- 15 kSps sample rate
- 2.2 to 3.6 volt supplies
- -40 to 125 °C temperature range
- Ultraminiature 2.5 x 2.5 TDFN6 package

Applications include:

- Proximity sensing
- Noncontact current sensing as low as 100 mA
- Automotive applications
- Cylinder position sensing
- Security and intrusion detection

Available Now

The SM223 and the rest of our Smart Magnetometers are [in stock](#) for immediate delivery:

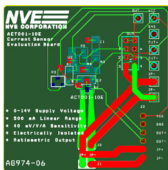
Part Number	Field Range	Accuracy	Speed	Outputs	Pkg.
SM124-10E	1 mT	5%	10 kSps	I ² C; Digital Threshold	2.5 x 2.5 mm DFN6
SM125-10E	4 mT	5%	10 kSps		
NEW SM223-10E	1.5 mT	2%	15 kSps	SPI	
SM225-10E	15 mT	2%	15 kSps		
SM228-10E	15 mT	2%	15 kSps	I ² C; Digital Threshold	
SM324-10E	2 mT	0.3%	300 Sps		

Smart Magnetometer [breakout boards](#) and [evaluation kits](#) are also available.

Buy Online
\$9.95 shipping

Current Sensor Evaluation Board

A new isolated current sensor evaluation board allows you to test the remarkable ACT001-10E current sensor and a common application circuit.



The ACT001-10E is a fully-isolated, inline current sensor with an on-chip current strap. A Wheatstone bridge manufactured with NVE's state-of-the-art tunneling magnetoresistance (TMR) sensor elements detects the magnetic field from the input current across NVE's unique polymer isolation barrier.



Applications include:

- AC and DC motor control
- Power measurement
- Overcurrent protection
- Battery management systems

Key ACT001-10E **specifications** include:

- ±500 mA linear range
- 0.04 mV/V-mA sensitivity (typ.)
- 0 to 14 V supply (no minimum)
- Fully isolated
- Ultraminiature 2.5 x 2.5 DFN6 package

Available Now

ACT001-10E sensors and evaluation boards are [in stock](#) for immediate delivery.

Buy Online
\$9.95 shipping



Subscribe  
Sensor and Isolator NEWS